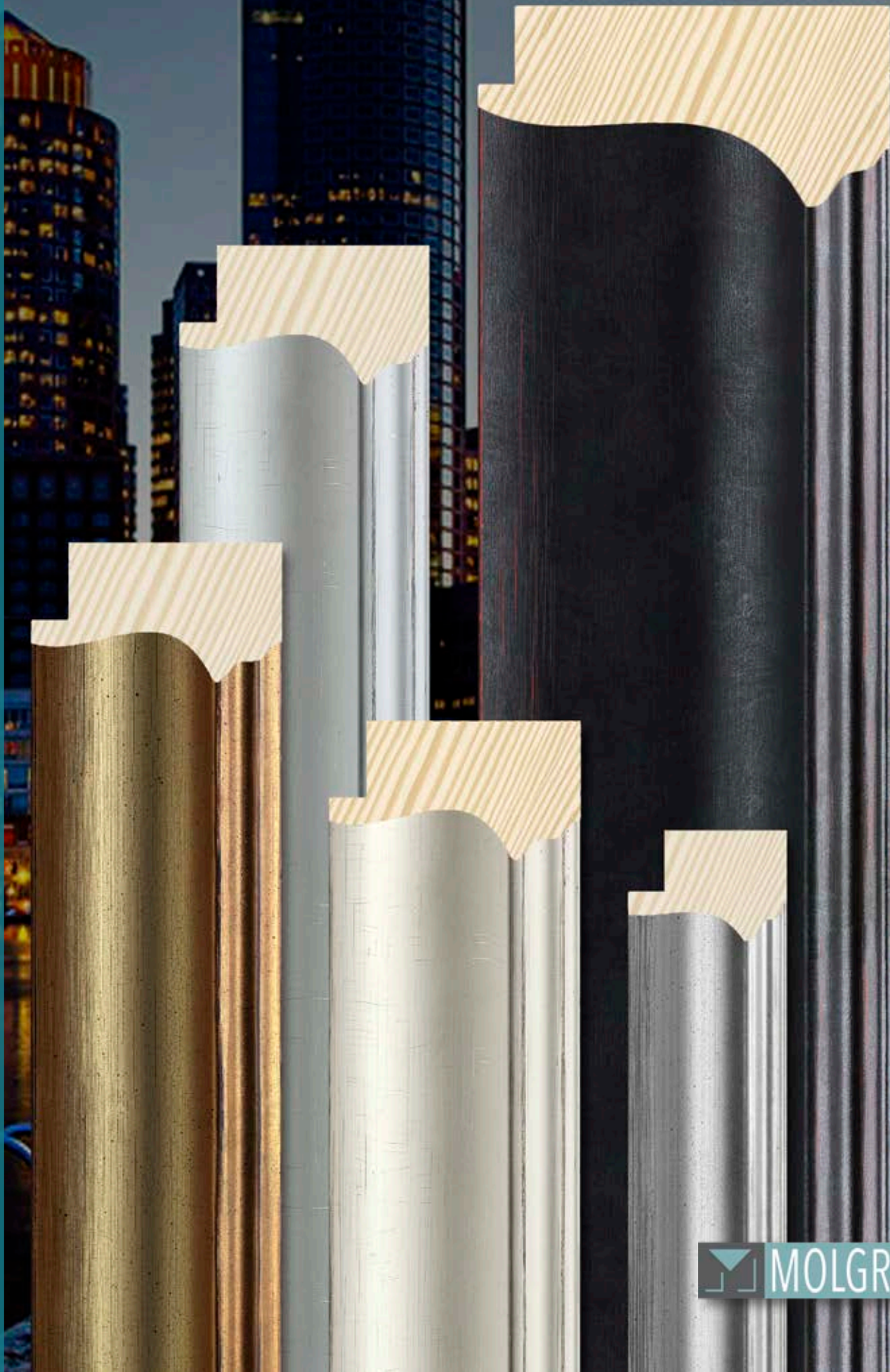


Boston

M O L G R A C O L L E C T I O N



Boston Collection

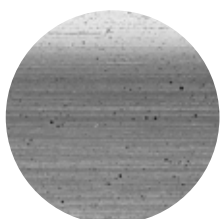
The BOSTON collection is a glamorous series of curved profiles with fine stripes, for artworks or mirrors that need a nobler treatment. It consists of three profiles in finger-joint pine, where the outer edge has been striated, and includes a concave elegant wave in the width.

It highlights a wide profile of 78x38mm, and two medium ones of 47x26mm and 30x21 mm, respectively. The larger dimensions allow you to apply finishes with gold and silver colored films, valued with a discreet and slightly old-like brushed patina. We have also developed black and white finishes with reflections where the fine stripes give a touch of “décapé”.

The BOSTON is undoubtedly at the height of gold leaf moldings, but more affordable and easy to work, as well as a versatile product of high quality.



Patinated gold
/451



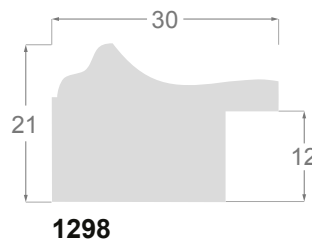
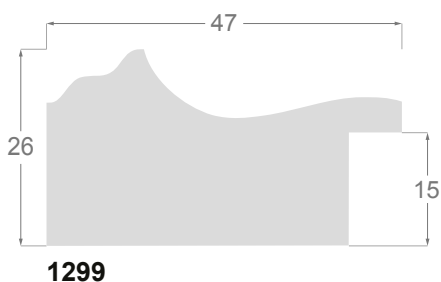
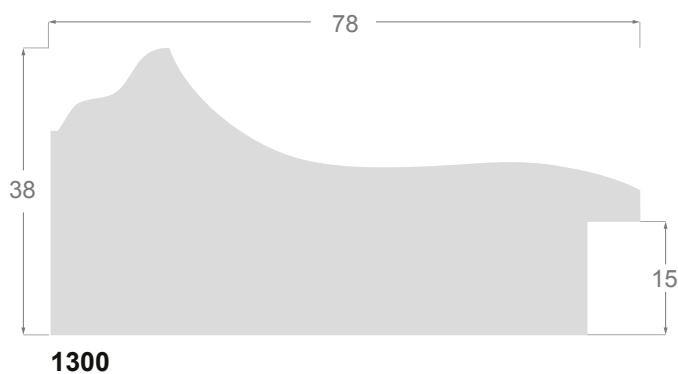
Patinated silver
/453



Patinated black
/454



Patinated white
/455





1300/451 78x38mm



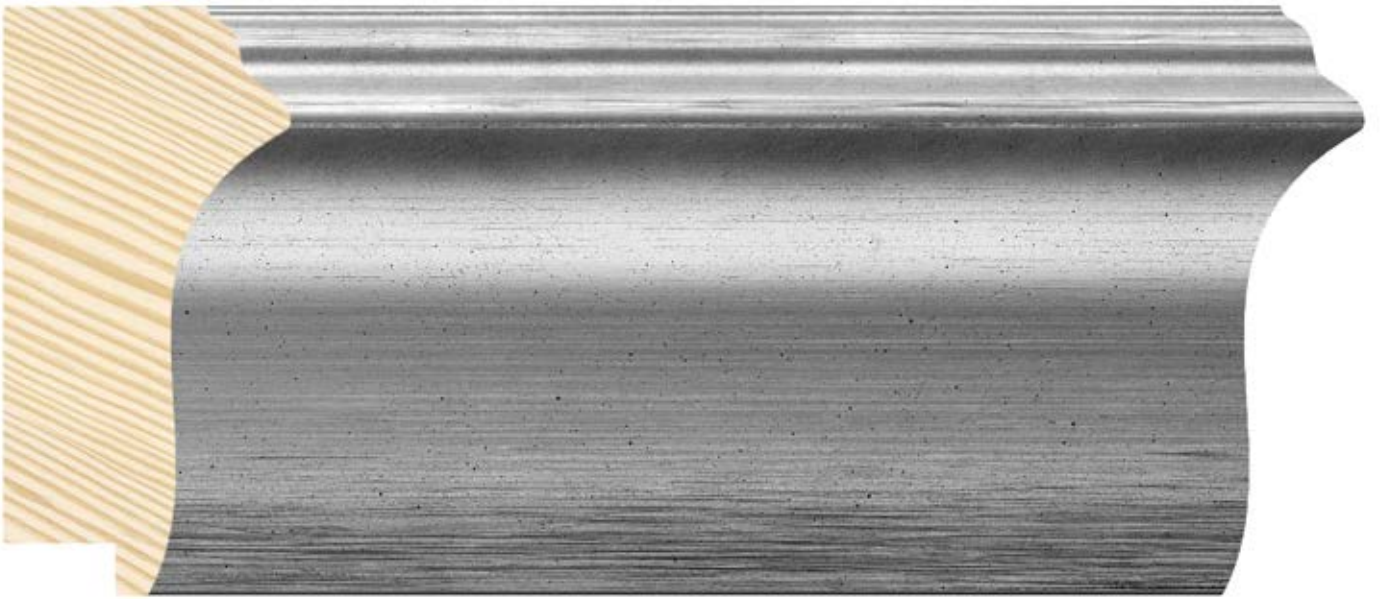
1299/451 47x26mm



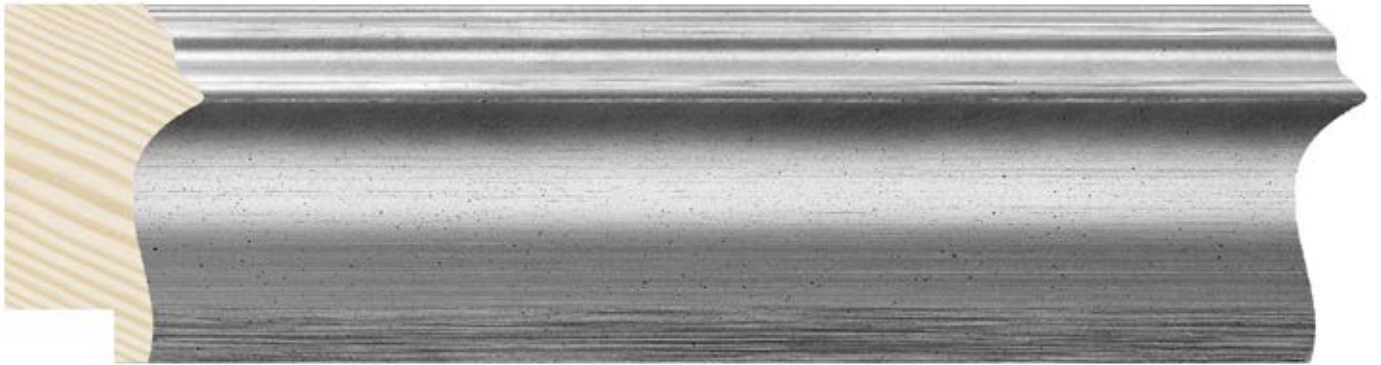
1298/451 30x21mm



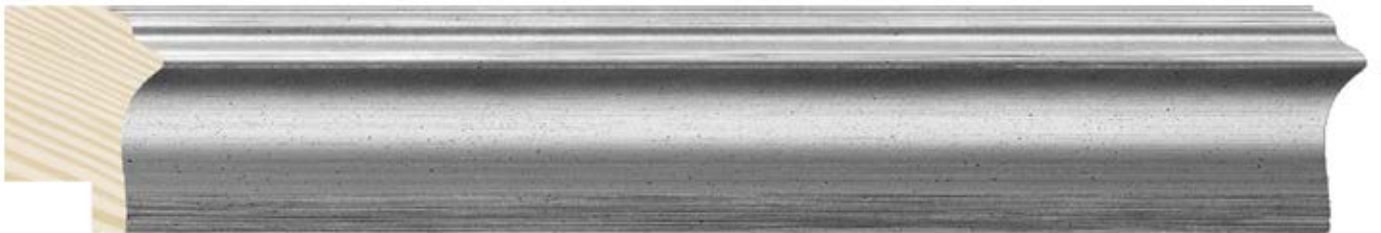
1300/453 78x38mm



1299/453 47x26mm



1298/453 30x21mm



1300/454 78x38mm



1299/454 47x26mm



1298/454 30x21mm



1300/455 78x38mm



1299/455 47x26mm



1298/455 30x21mm





www.molgra.com



Av. de Cervera 16
25300 TÀRREGA (LLEIDA) Spain
Tel. +34 973 312 304
comercial@molgra.com

