

Siena

M O L G R A C O L L E C T I O N



 MOLGRA

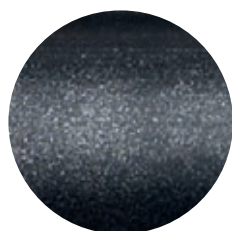
# Siena Collection

SIENA represents a very innovative molding within the MOLGRA catalog. It develops a profile made of finger-jointed pine or spruce, with some straight outer edge, where we lengthened the rebate, giving it also a profile shape.

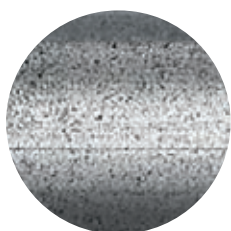
The result is a double molding, which provides the frame with a distinguished outlook that fits many work formats, even in the smallest dimensions.

Accompanying the shape of the double profile, the molding is always decorated in two shades: one of the edges has a golden or silvery smooth and satin edge, while the inner part and the outer edge have been painted with a unique special patina in glazed tones, in black satin, ivory and pearly grey. One may note the high quality of the product, which is noticeable in the separation of the two shades inside the molding.

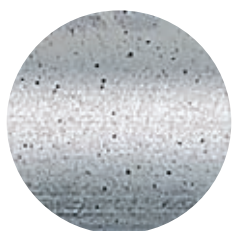
The combination of gold or silver with another tone highlights the framed artwork and allows many possibilities. This particular molding is fine for engravings, drawings, and posters but opens a world of combinations that the framer, we are sure of it, will want to explore.



**/409**



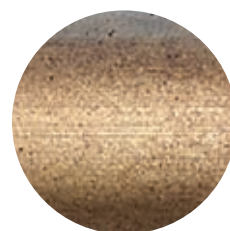
**/410**



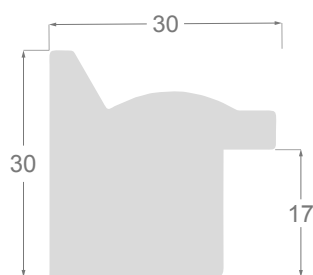
**/411**



**/407**



**/408**



**1268**

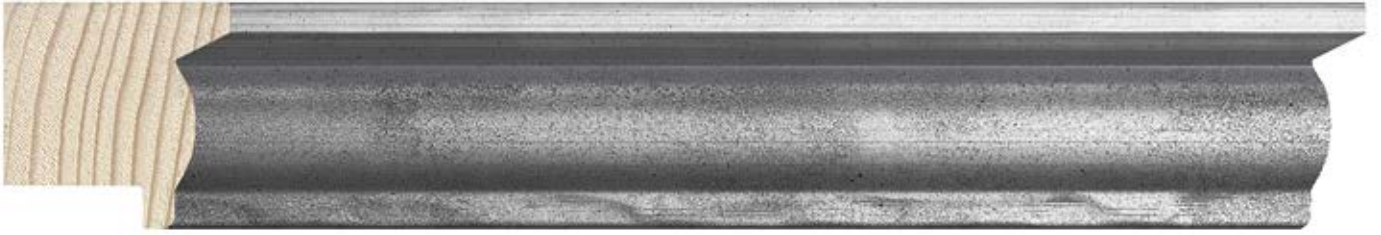




**1268/409** 31x30mm



**1268/410** 31x30mm



**1268/411** 31x30mm



**1268/407** 31x30mm



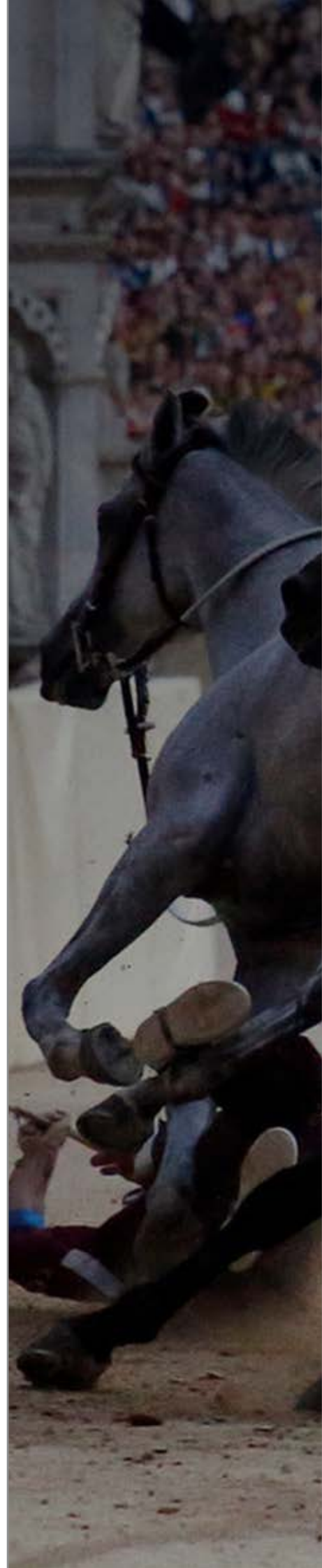
**1268/408** 31x30mm







[www.molgra.com](http://www.molgra.com)



Av. de Cervera 16  
25300 TÀRREGA (LLEIDA) Spain  
Tel. +34 973 312 304  
Fax: +34 973 313 118  
[comercial@molgra.com](mailto:comercial@molgra.com)