

M O L G R A C O L L E C T I O N



# Cosmopolitan Collection

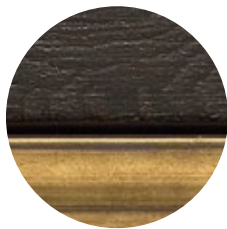
COSMOPOLITAN represents for MOLGRA a classic molding that we have updated at the request of our customers. The collection consists of two profiles in finger-jointed pine or spruce, and it comes in two different sizes: 33x20 and 50x30mm. Each profile has received four different finishes: white with a silvered rebate, ivory and “cava”, and two walnut tones with a gold or silver rebate.

The central part of the profile, up to the outer edge set with a right angle, is covered with a thin film, which mimics the noble veins of wood. To highlight the silvered or golden color of the top of the rebate, a channel was opened in the profile, to separate the two finishes.

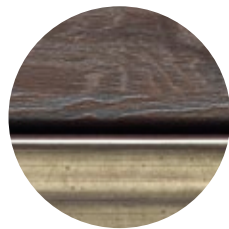
It should be noted that the inner edge was deliberately inclined and slightly elongated towards the artwork that will be framed, with a slightly undulating shape. A special finish applies a “vintage” effect through thin stripes.

The whole gives a noble and elegant molding, which integrates with minimalist or refined interiors. It can be adapted to many artworks, whether they are paintings, serigraphs, engravings, pictures, etc.

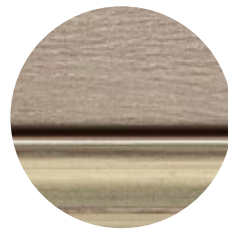
COSMOPOLITAN is a complement to our collections such as SIENA and ELISE, which seek a balance between contemporary sobriety and classicism.



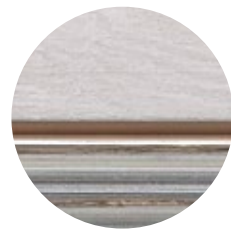
**/425**



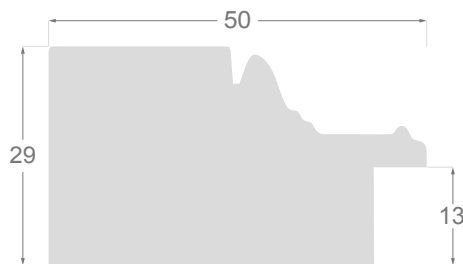
**/426**



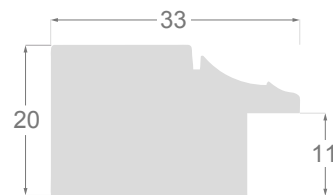
**/427**



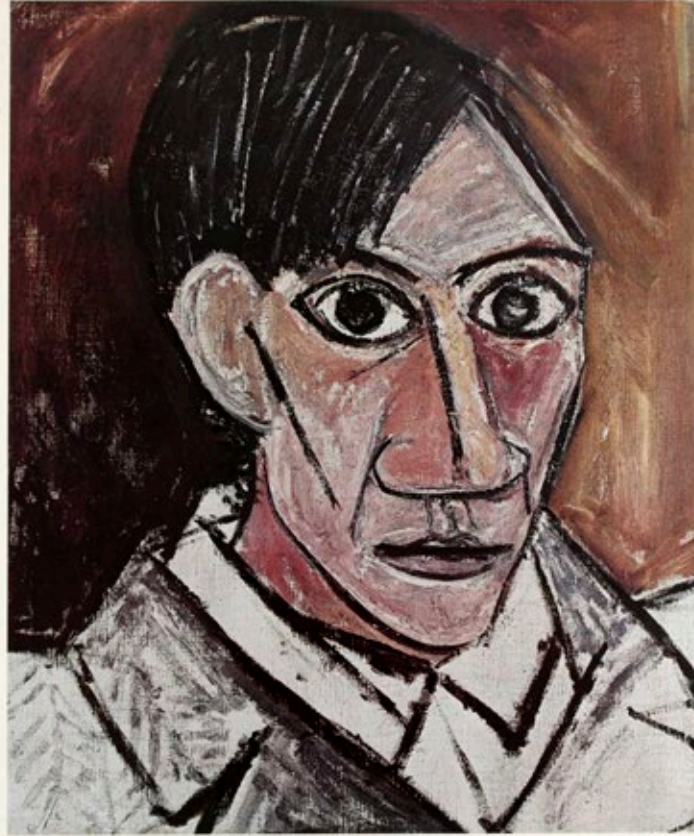
**/428**



**1289**



**1288**



# PABLO PICASSO

A R E T R O S P E C T I V E

THE MUSEUM OF MODERN ART, NEW YORK, MAY 22-SEPTEMBER 16, 1980

PABLO PICASSO: A RETROSPECTIVE has been made possible by a generous grant from IBM. Additional support has been provided by the Robert Wood Johnson Jr. Charitable Trust and the National Endowment for the Arts. An indemnity for the exhibition has been provided by the Federal Council on the Arts and the Humanities.

1288/425 33x20mm



1289/426 50x30mm



1288/426 33x20mm



1289/427 50x30mm



1288/427 33x20mm



1289/428 50x30mm



1288/428 33x20mm



bauhaus

retrospective  
1919 - today

MOMA

The Museum of Modern Art  
11 West 53rd Street, New York, NY 10019

July 1, 2011 -  
August 31, 2011





# MATISSE

IN THE COLLECTION OF  
THE MUSEUM OF MODERN ART

OCTOBER 27, 1978, TO JANUARY 30, 1979

This exhibition has been made possible by a generous grant from the Robert Wood Johnson Jr. Charitable Trust.



[www.molgra.com](http://www.molgra.com)



Av. de Cervera 16  
25300 TÀRREGA (LLEIDA) Spain  
Tel. +34 973 312 304  
[comercial@molgra.com](mailto:comercial@molgra.com)

