

M O L G R A C O L L E C T I O N



# Stratos





# Stratos Collection

Stratos was born from the current enthusiasm towards the natural and refined home interiors, focused on the essential: noble materials that absorb light, adding value to the framed artwork.

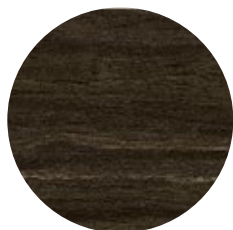
It consists in profiles with straight edges or pyramid-like shape, made of finger-joint pine, coated on their straight faces with an exclusive and high quality macassar-made natural veneer, covering up to the upper side of the rebate.

We have used two shades of natural veneer: one being warm and avant-garde, the other being darker and more sober. Both are highlighted through the fine colors of the wood veins drawn on the profile.

Stratos thus allows introducing an original collection in contemporary interiors, strengthening framed items set on light-colored walls, or on modern surfaces, such as smooth cement.

The framer can propose an elegant alternative to the classic black and white moldings, even competing with wood moldings when stronger shades are required.

Stratos represents an unpredictable complement to the other collections of Molgra that use natural veneers, such as Altis, and thus allows covering a wide range of tones.



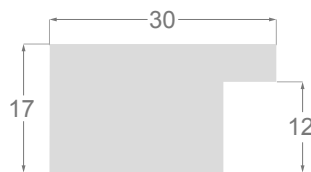
**/328**



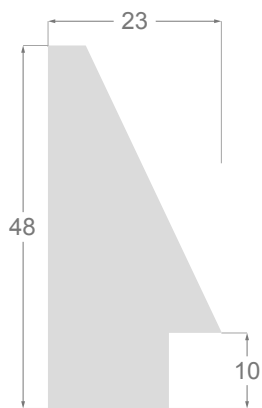
**/307**



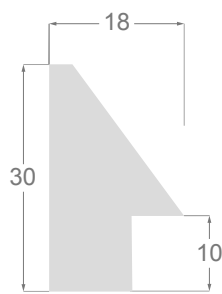
**1132**



**1096**



**1238**



**1237**



1132/328 48x20mm



1096/328 30x17mm



1096/307 30x17mm



1238/307 23x48mm



1237/307 18x30mm









C-14, 5 (A2 - Sal. 507) - 25300  
Tàrraga (Lleida) - España  
Tel. +34 973 312 304  
comercial@molgra.com  
[www.molgra.com](http://www.molgra.com)

